



© O&O software

O&O BlueCon 24

Table of contents

About O&O BlueCon	2
New Features and Changes in O&O BlueCon 24	2
New Licensing Model with New Editions	2
Automatic Updating of the O&O BlueCon Environment	3
Editions at a Glance	3
Personal Edition	3
Corporate Edition	3
Technician Edition	3
Site Edition	3
Enterprise Edition	3
Which Edition Is Right for You?	4
Explanation of the Main Functions	4
Typical Use Cases	4
O&O BlueCon 24 Personal Edition	5
System Rescue for Your Home PC – Simple, Powerful, and Always Ready	5
What Is O&O BlueCon?	5
Perfect for Private Use	5
Your Options with O&O BlueCon	5
Repair Your PC – Even If Windows Does Not Start	5
Recover Lost Data	6
Restore Access	6
Fix Typical Problems	6
Typical Use Cases for the Personal Edition	6
“My PC no longer starts!”	6
“I accidentally deleted files!”	6
“I forgot my Windows password!”	7
“Nothing works after an update!”	7
What Is Included in the Personal Edition?	7
Do You Need More Functions?	7
Windows-Based Interface	7
Backing Up Data from Defective Systems	8
Disable Faulty Drivers and System Services	8
Editing the Registry	8
Access Without an Administrator Password	8
Securely Deleting Data	8
Data Recovery Included	9
Backup with O&O DiskImage	9
Removing Installed Windows Updates	9
The O&O BlueCon Assistant	9
Creating the Boot Environment	10
Starting O&O BlueCon from the Boot Medium	11
Use Cases	12
Starting O&O BlueCon from a Bootable Medium	14
O&O FileExplorer	15
O&O UpdateRemover	18
O&O DeviceManager	19
O&O Check&Repair	21
O&O EventViewer	22
O&O RegEditor	23
O&O UserManager	25
Microsoft PowerShell	27
Command Reference	29
attrib	29
cd	29
cls	29
copy	29

del	30
deltree	30
device / service	30
dir	30
edlin	30
exit	30
help	30
info	31
mkdir	31
passwd	31
rename	31
rmdir	31
safeerase	32
scopy	32
type	32
user	32
ver	32
vmap	32
xcopy	33
O&O SystemInfo	33
System Settings	34
Web Browser	35
O&O Notepad	35
O&O Calc	37

About O&O BlueCon

Thank you for your trust. We are pleased to introduce you to O&O BlueCon.

With **O&O BlueCon**, you have a powerful emergency and maintenance system at your disposal that allows you to analyze, repair, and restore damaged or non-booting Windows systems – without having to reinstall Windows. O&O BlueCon is started directly from a bootable medium and enables access to the affected system even when Windows itself no longer starts.

The Windows-based user interface makes operation easier and allows for a quick start. This makes O&O BlueCon suitable for home users as well as administrators, service technicians, and IT departments.

The following chapters explain how to use O&O BlueCon effectively, which functions are available, and which edition is suitable for your use case.

We hope you enjoy using O&O BlueCon and wish you every success with the product. If you have any questions or suggestions regarding our products or licensing, please contact us – we will be happy to help.

Your O&O Software Team <https://www.oo-software.com>

New Features and Changes in O&O BlueCon 24

O&O BlueCon 24 includes important changes to licensing, editions, and the creation of the rescue environment.

New Licensing Model with New Editions

O&O BlueCon is now even more precisely tailored to different areas of use. The new licensing model offers suitable editions for every user and use case – from private home use to worldwide enterprise deployment.

The following editions are available:

- **Personal Edition**
- **Corporate Edition**
- **Technician Edition**
- **Site Edition**
- **Enterprise Edition**

This allows you to license O&O BlueCon exactly according to your usage scenario – for a single private PC, a business PC, multiple customer systems, one site, or a global IT infrastructure.

Automatic Updating of the O&O BlueCon Environment

The O&O BlueCon environment is now automatically updated to the latest available version when it is created. The latest available Windows RE image from Microsoft is always used.

This means:

- The rescue environment is based on an up-to-date Windows Recovery Environment.
- O&O BlueCon can be created even if the local Windows Recovery Environment is damaged or faulty.
- Compatibility with current Windows systems is improved.
- Creation of the boot medium is more reliable.

Editions at a Glance

O&O BlueCon 24 is available in several editions. Each edition is tailored to a specific use case.

Personal Edition

The **Personal Edition** is designed for home users who need a reliable solution for system rescue and maintenance on a single PC.

It supports common Windows editions such as Home, Pro, and Education and focuses on the most important repair, diagnostic, and recovery functions. It is ideal for private use at home.

The Personal Edition does not include advanced network, Active Directory, or deployment functions.

Corporate Edition

The **Corporate Edition** is designed for professional use within a company.

It is licensed for one PC, supports all Windows editions, and includes O&O DiskImage for integrated backup and restore functions. With Active Directory support, it is ideally suited for use in corporate environments.

Technician Edition

The **Technician Edition** is intended for IT professionals, service technicians, and providers who work on multiple systems – including customer systems on site.

Licensing is per technician and enables flexible use in different environments. With O&O DiskImage included, deployment functionality, and full Windows and Active Directory support, it is the ideal tool for professional service and support operations.

Site Edition

The **Site Edition** is intended for companies that manage all PCs at one location.

It allows use on all systems within a single site and includes both O&O DiskImage and deployment functions. This makes it ideal for IT departments that want to centrally manage maintenance, system rescue, and rollouts.

Enterprise Edition

The **Enterprise Edition** offers maximum flexibility for large companies with multiple sites worldwide.

It enables company-wide use without site restrictions and includes O&O DiskImage as well as deployment rights. Designed for complex IT infrastructures, it supports consistent strategies for system rescue, maintenance, backup, and recovery on a global scale.

Which Edition Is Right for You?

The right edition depends on how and where you want to use O&O BlueCon.

Edition	Suitable for	Licensing	O&O DiskImage	Active Directory	Deployment
Personal Edition	Home users	1 private PC	No	No	No
Corporate Edition	Companies	1 business PC	Yes	Yes	No
Technician Edition	IT technicians and service providers	Per technician	Yes	Yes	Yes
Site Edition	Companies with one site	All PCs at one site	Yes	Yes	Yes
Enterprise Edition	Large companies with multiple sites	Company-wide	Yes	Yes	Yes

The exact scope of functions may vary depending on the license and edition model. Further information is available on the O&O website or from our sales team.

Explanation of the Main Functions

A Windows system that suddenly no longer starts is every user's and administrator's nightmare. If neither a restart nor automatic repair or restoring previous settings helps, fast and targeted action is required.

O&O BlueCon is a powerful emergency and maintenance system for exactly these situations. It enables access to non-booting Windows systems, assists with error analysis, and provides tools for repair, data recovery, data backup, and system administration.

O&O BlueCon is started **without installation directly from a bootable medium**. This allows you to access a system even when Windows can no longer be started from the hard drive. Existing data and installations remain untouched.

The focus is on:

- Restoring non-booting systems
- Backing up and recovering important data
- Analyzing and fixing system errors
- Restoring access to user accounts
- Maintaining and administering damaged Windows installations
- Securely deleting sensitive data
- Backup and restore tasks, if included in the respective edition

Typical Use Cases

O&O BlueCon supports you in situations such as:

- Windows no longer starts or aborts during startup
- System crashes after faulty driver or Windows updates
- Forgotten administrator or user passwords
- Damaged registry entries
- Urgent data backup on defective systems
- Data recovery after accidental deletion or malware infection
- Secure deletion of sensitive data

- Management of disks and partitions
 - Restoration of complete systems or drives, if O&O DiskImage is included in the respective edition
 - Preparation and execution of deployment tasks, if included in the respective edition
-

O&O BlueCon 24 Personal Edition

System Rescue for Your Home PC – Simple, Powerful, and Always Ready

What do you do if your PC suddenly no longer starts?

No access. No data. No solution?

With **O&O BlueCon 24 Personal Edition**, you have a powerful rescue system at hand that can make your PC accessible again – even if Windows no longer starts.

The Personal Edition was developed specifically for home users who want to use professional tools for system rescue and maintenance on a single private PC.

What Is O&O BlueCon?

O&O BlueCon is a bootable rescue system that starts independently of the installed Windows version. You can run it from a USB stick, for example, and access systems that no longer start normally.

With O&O BlueCon, you can:

- Repair systems
- Recover data
- Analyze and fix errors
- Restore access to local user accounts
- Back up files
- Manage drives
- Securely delete sensitive data

All in a single rescue environment.

Perfect for Private Use

The **Personal Edition** is ideal for:

- one private PC
- use at home
- users who want to use professional rescue tools easily
- repair and maintenance of common Windows systems such as Home, Pro, and Education

You receive the most important powerful functions of O&O BlueCon – optimized for private use.

Advanced enterprise functions such as Active Directory support, deployment functions, or O&O DiskImage are not included.

Your Options with O&O BlueCon

Repair Your PC – Even If Windows Does Not Start

With O&O BlueCon, you start your PC from a bootable medium, such as a USB stick. This allows you to examine startup problems and perform repairs without having to start Windows normally.

Typical tasks:

- Booting from a USB stick

- Analyzing startup problems
 - Repairing damaged Windows installations
 - Fixing faulty driver or service settings
 - Accessing system files and configurations
-

Recover Lost Data

If Windows no longer starts or files have been accidentally deleted, you can use O&O BlueCon to back up or recover important data.

Possible tasks:

- Recover deleted files
 - Access data despite a defective Windows installation
 - Copy important files to external storage media
 - Analyze drives and perform data recovery attempts
-

Restore Access

If a local Windows password has been forgotten, O&O BlueCon can help restore access to the system.

Possible tasks:

- Reset local Windows passwords
- Check user accounts
- Re-enable access to local accounts

The Personal Edition does not support Active Directory environments. Functions for restoring or managing domain accounts are only available in the corresponding business editions.

Fix Typical Problems

O&O BlueCon contains numerous tools for analyzing and maintaining damaged systems.

You can, among other things:

- Correct driver errors
- Disable faulty services
- Fix registry problems
- Analyze and repair systems
- Edit files directly
- Manage disks and partitions
- Securely delete data

O&O BlueCon is therefore often referred to as the “Swiss army knife of system rescue,” as it combines many important tools in a single solution.

Typical Use Cases for the Personal Edition

“My PC no longer starts!”

Start O&O BlueCon from the USB stick, analyze the system, and fix the cause of the startup problem.

“I accidentally deleted files!”

Scan the affected drive and try to recover the deleted files.

“I forgot my Windows password!”

Reset the password of a local user account and regain access to your system.

“Nothing works after an update!”

Analyze drivers, services, and installed updates to stabilize the system again.

What Is Included in the Personal Edition?

The Personal Edition includes all important tools for system rescue, diagnostics, and repair of a private PC.

Included are, among others:

- Repair and diagnostic functions
- Access to non-booting Windows systems
- Data recovery tools
- File management
- Registry editing
- Management of local user accounts
- Disk and partition management tools
- Secure data deletion

Not included are:

- Active Directory support
 - O&O DiskImage
 - Deployment functions
 - Use on multiple PCs
 - Use on customer systems or in service environments
-

Do You Need More Functions?

If you need additional functions, we recommend one of the business editions.

This applies especially if you:

- need backup and restore functions with O&O DiskImage
- want to use O&O BlueCon in a company
- manage multiple PCs
- maintain customer systems
- need Active Directory support
- want to use deployment functions

Recommended editions:

- **Corporate Edition** – for one business PC
 - **Technician Edition** – for IT technicians, service providers, and use on multiple systems
 - **Site Edition** – for all PCs at one company site
 - **Enterprise Edition** – for company-wide use across multiple sites
-

Windows-Based Interface

O&O BlueCon offers a **Windows-like graphical user interface** with taskbar, Start menu, and program buttons. All important functions can be conveniently operated with the mouse, without necessarily having to enter command-line commands.

For experienced users, a **command line** and a **batch file editor** are also available for executing, editing, or creating scripts.

Backing Up Data from Defective Systems

With O&O BlueCon, you can safely copy data from non-bootable or damaged Windows systems to external storage media. Access is controlled so that important data can be backed up before further repair measures are performed.

Simply start the O&O BlueCon boot medium and use the integrated **O&O FileExplorer** to access detected drives, partitions, and network resources.

Access to network resources and enterprise environments may vary depending on the edition and license model.

Disable Faulty Drivers and System Services

One of the most common causes of system crashes is faulty or incompatible drivers and system services. These are loaded before user logon and often cannot be corrected during normal Windows operation.

With the **O&O DeviceManager**, you can:

- disable faulty drivers or services
- replace problematic components
- specifically analyze and fix startup problems

Editing the Registry

The Windows Registry is the central repository for system and user settings. Faulty entries can cause Windows to stop starting or become unstable.

The **O&O RegEditor** allows you to:

- edit registry entries of non-booting systems
- correct faulty driver and service parameters
- directly access offline registry hives

Access Without an Administrator Password

If a user or administrator password is lost, logging on to the system is no longer possible. With the **O&O UserManager**, O&O BlueCon provides a tool that allows you to delete or reset passwords of local user accounts – without having to reinstall Windows.

In the Personal Edition, this function applies to local user accounts. Active Directory and domain functions are only available in the corresponding business editions.

Securely Deleting Data

With O&O BlueCon, data and entire partitions can be securely deleted using **O&O SafeErase** technology. Recognized deletion methods are used, overwriting data multiple times. This prevents later recovery.

Data Recovery Included

For data recovery, **O&O DiskRecovery** is integrated into O&O BlueCon. It can recover accidentally deleted data or data lost due to software errors, including from:

- formatted storage media
 - damaged file systems
 - files deleted by viruses or malware
 - accidentally deleted files and folders
-

Backup with O&O DiskImage

Depending on the license and edition model, O&O DiskImage can be started directly from O&O BlueCon without prior installation.

This allows you, among other things, to:

- restore previously created system backups
- restore complete drives or partitions
- create forensic 1:1 images of defective drives

Forensic images can be mounted as drives in Windows, allowing data recovery attempts to be performed while the original drive remains unchanged.

Note: O&O DiskImage is included in O&O BlueCon depending on the respective license and edition model. O&O DiskImage is not included in the Personal Edition.

Removing Installed Windows Updates

The **O&O UpdateRemover** offers significantly more options than Windows' own repair functions. While Windows usually provides only limited options for uninstalling updates, O&O UpdateRemover displays a comprehensive list of installed and removable updates.

This is especially helpful if a Windows system no longer starts or becomes unstable after an update.

The O&O BlueCon Assistant

The **O&O BlueCon Assistant** provides a central overview of all important functions after startup. With just one click, you can go directly to the required tools without having to navigate through menus or submenus.

This saves valuable time, especially in critical emergency situations.

System Requirements

- **4 GB RAM** recommended for basic functionality
- Boot-capable **CD, DVD, or USB drive**
- To create a boot medium (O&O BuildPE):
 - Windows 10 (all editions)
 - Windows 11 (all editions)
 - Windows Server 2019, Windows Server 2022 or Windows Server 2025
- Supported Windows versions:
 - Windows NT 4.0

- Windows 2000
 - Windows XP
 - Windows Vista
 - Windows 7
 - Windows 8.1
 - Windows 10 (all versions up to and including 25H2)
 - Windows 11 (all versions up to and including 25H2)
 - Windows Server 2003
 - Windows Server 2008 / 2008 R2
 - Windows Server 2012 / 2012 R2
 - Windows Server 2016
 - Windows Server 2019
 - Windows Server 2022
 - Windows Server 2025
- Supported file systems:
 - FAT12 / FAT16 / FAT32
 - NTFS4 / NTFS5
 - A web browser (Internet Explorer 6.0 or later) is required for proper functionality

Note: To start the O&O BlueCon boot medium, the boot order in the BIOS/UEFI must be adjusted accordingly. Please refer to your motherboard manufacturer's documentation for further details.

Creating the Boot Environment

With O&O BlueCon, you can quickly and easily create a **bootable emergency medium**. This allows access to systems that no longer start and provides all tools required for maintenance, repair, and recovery tasks.

Before you begin, make sure that you have purchased and downloaded O&O BlueCon. You will also need a suitable storage medium for the boot environment—typically a **USB flash drive with sufficient free space**. Alternatively, O&O BlueCon can be integrated directly into an existing Windows installation.

Creating a USB Flash Drive, ISO, or WIM Image

Select the target medium on which the boot environment will be created. In most cases, a **USB flash drive** is recommended, as it is flexible and can be used directly as a boot device.

1. Connect the USB flash drive to your computer
2. Select the desired target medium (USB flash drive, ISO, or WIM)

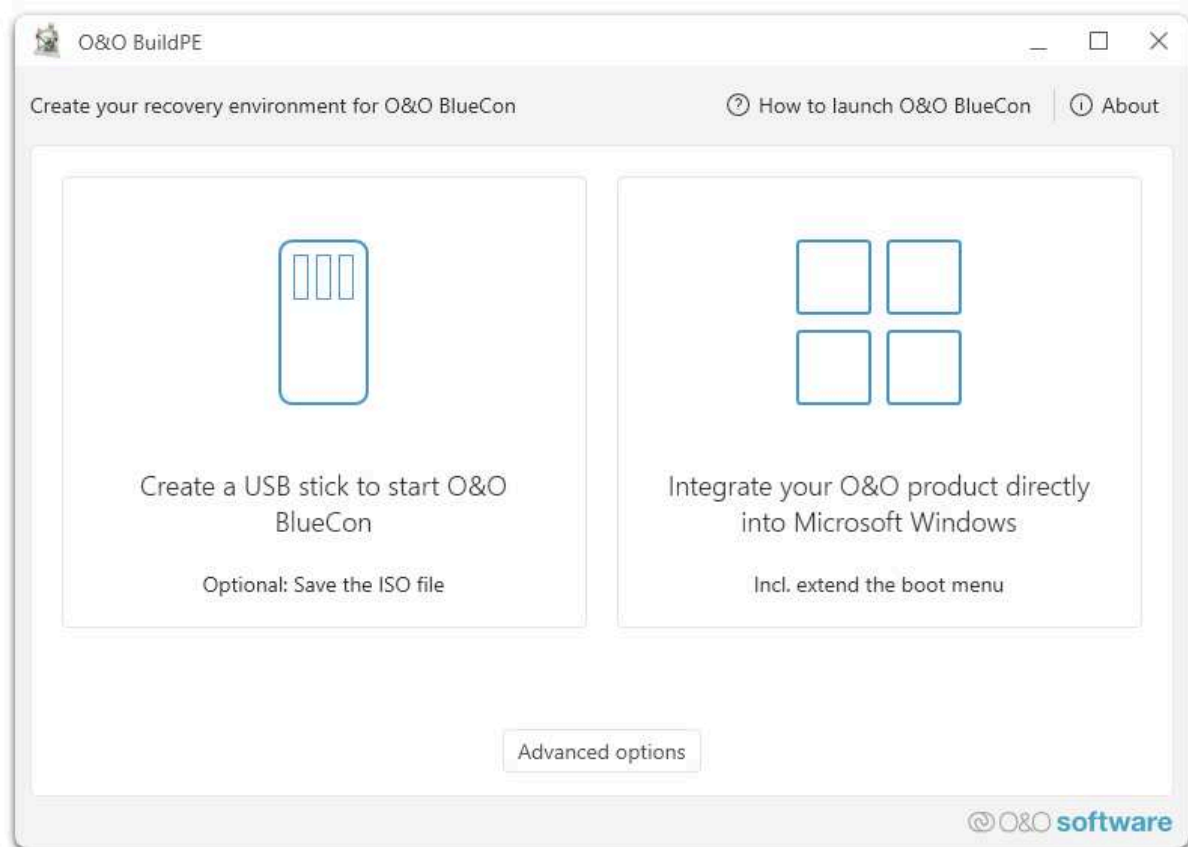


Figure 1: O&O BlueCon

3. Start the creation process

Depending on the purchased license, O&O BlueCon automatically creates the version of the boot environment that is appropriate for you.

Note: The selected USB flash drive will be completely overwritten during the creation process. All data stored on it will be irreversibly lost!

Once the process is complete, you will receive a confirmation that the boot medium has been created successfully. The medium can then be safely removed from the computer.

Starting O&O BlueCon from the Boot Medium

To use the boot medium, restart your computer and configure the **BIOS or UEFI** boot order so that the system boots from the USB flash drive (or the corresponding medium).

After a successful start, you will have direct access to all O&O BlueCon tools and can immediately begin maintenance, repair, or recovery tasks.

Integrating O&O BlueCon into Microsoft Windows

Alternatively, O&O BlueCon can be integrated directly into the **Windows Recovery Environment**. This allows the system to be started into the O&O BlueCon environment via the Windows boot menu in case of errors—such as bluescreens, startup problems, or malware infections.

This method is particularly convenient, as no external boot medium is required.

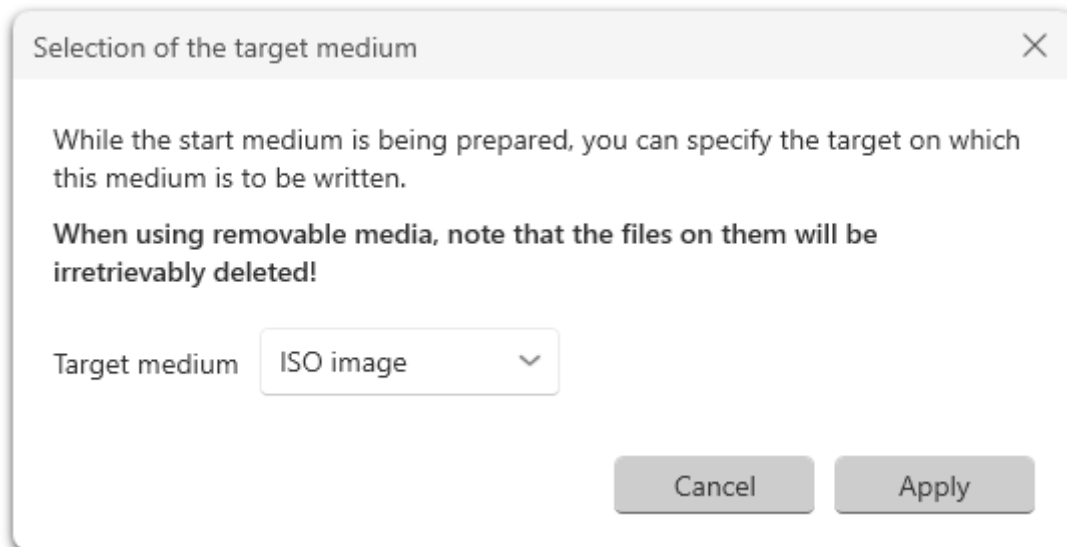


Figure 2: Create ISO

Note: Integrating the boot environment into remote systems is not supported for certain configurations.

After the integration process has completed successfully, you will receive a confirmation. Restart the computer and select **O&O BlueCon** from the list of available boot options in the boot menu. O&O BlueCon will then load and be immediately available.

Use Cases

To enable fast and targeted troubleshooting, typical use cases are described below. The examples explain step by step how the tools included in O&O BlueCon can be used in practice.

Password Forgotten

A user has forgotten their Windows logon password and can no longer sign in to the system. You are asked for help as an administrator.

Solution: 1. Start O&O BlueCon. 2. Open **O&O UserManager** via **Start / Programs / Administration / User Management**. 3. Click **User Accounts**. 4. Select the affected user from the list. 5. Click **Change Password** and follow the instructions in the dialog window. 6. Exit O&O BlueCon and restart the computer.

The user can now sign in using the new password.

Important: After changing a password with O&O BlueCon, access to encrypted files (e.g., EFS) is no longer possible because they can no longer be decrypted.

Note: O&O UserManager can manage local user accounts only. No changes can be made on domain controllers.

Accessing Data on a Non-Bootable Computer

A Windows system no longer starts, but important data must be backed up urgently before further repair attempts are made.

Solution: 1. Connect an external storage device (e.g., USB flash drive or external hard drive). 2. Start O&O BlueCon. 3. Open **O&O FileExplorer** via **Start / Programs**. 4. Browse to the required files or folders. 5. Copy them to the external storage device.

Tip: Access is performed without modifying the source system by default. This minimizes the risk of additional data loss.

Securely Deleting Data Before Handing Over a Computer

Before selling, handing over, or disposing of a computer, all personal or business data must be deleted completely and irreversibly.

Windows only removes data logically — even formatting a drive is not sufficient to securely erase data.

Solution: 1. Start O&O BlueCon. 2. Open **Start / Programs / Data Security / O&O SafeErase**. 3. Select the desired deletion method in the O&O SafeErase wizard. 4. Follow the instructions in the dialog window.

Note: Data deleted with O&O SafeErase cannot be recovered. Ensure all important data has been backed up in advance.

Note: Detailed information can be found in the program help for O&O SafeErase.

Recovering Accidentally Deleted Data

A user has accidentally deleted important files or folders and then emptied the Recycle Bin. The data must be restored as quickly as possible.

Solution: 1. Start O&O BlueCon. 2. Open **Start / Programs / Data Recovery / O&O DiskRecovery**. 3. Click **Next** to proceed to drive selection. 4. Select the affected drive. 5. Confirm the default settings and start the scan. 6. After the scan, select the files to be recovered.

Optionally, use the **Preview function**. 7. Choose a target folder that is **not** located on the source drive. 8. Start the recovery and review the completion report.

Note: Sufficient free storage space must be available for the recovered data.

Modifying or Repartitioning the System Partition

A computer has only a single partition for both system and user data. To separate system and data, new partitions are to be created.

Solution: 1. Start O&O BlueCon. 2. Open **Start / Programs / Administration / O&O PartitionManager**. 3. Select the system partition and open **Change Position and Size**. 4. Shrink the partition to the desired size. 5. Create a **new partition** in the unallocated space via the context menu. 6. Create additional partitions if required and confirm the changes.

Important: Partitioning operations involve an increased risk of data loss. Back up all important data beforehand.

Tip: A new primary partition can be made bootable using Mark as active. Only one active primary partition can exist per disk.

Removing Faulty Windows Updates

After a Windows update, the system no longer starts or behaves unstable. The built-in Windows recovery options are no longer available.

Solution: 1. Start O&O BlueCon. 2. Open **Start / Programs / Administration / O&O UpdateRemover**. 3. Select the problematic update from the list. 4. Remove the update and restart the system.

Restoring a Complete System from an Image

A system is so severely damaged that repairing it is no longer practical, but a full backup is available.

Solution: 1. Start O&O BlueCon. 2. Open **O&O DiskImage**. 3. Select the desired backup. 4. Restore the system image to the target computer. 5. Restart the computer after completion.

Access and Repair via Wireless Networks (Wi-Fi)

O&O BlueCon supports Wi-Fi connections, enabling access to network resources even without a wired connection.

This is particularly helpful: - in hard-to-reach server rooms - during mobile support operations - in environments without an Ethernet connection

Via Wi-Fi, you can, among other things: - perform system diagnostics - back up data to network drives - carry out repairs and recoveries

This significantly increases flexibility and shortens response times in critical situations.

Starting O&O BlueCon from a Bootable Medium

Note: At least 1 GB RAM is required to start O&O BlueCon from a bootable medium. For stable and optimal performance, 4 GB RAM is recommended.

Creating or Starting the Boot Environment

Further information on creating the O&O BlueCon boot environment can be found in the section **Creating the O&O BlueCon Boot Environment** using O&O BuildPE.

No installation is required to use O&O BlueCon on the target system. The program is started directly from the bootable medium (CD/DVD or USB flash drive). This is particularly necessary when:

- Windows no longer starts
- Repairs to the system partition are required
- Data needs to be backed up or restored
- Maintenance or analysis tasks must be performed outside the running Windows system

Starting from CD/DVD

1. Make sure your computer is configured to boot from CD/DVD.
The required settings can be configured in the **BIOS or UEFI**.
Detailed information is available from your motherboard manufacturer.
2. Insert the O&O BlueCon boot CD/DVD into the optical drive.
3. Restart the computer and follow any on-screen instructions to boot from the CD/DVD.
4. After the boot environment has loaded, the **System Settings** dialog appears.
Select the language and region.
5. Optionally, you can load additional drivers if certain devices are not yet recognized.
6. After accepting the license agreement, O&O BlueCon will start.

Starting from a USB Flash Drive

To start O&O BlueCon from a USB flash drive, the device must be selected as the boot medium either in the boot menu or in the BIOS/UEFI.

1. Open the **Boot Menu** during system startup (e.g., using **F8**, **F11**, **F12**, or **ESC**, depending on the manufacturer).
2. Set the USB flash drive (often listed as **Removable Devices** or **USB Device**) as the first boot option.
3. Confirm the selection. The computer will now start O&O BlueCon directly from the USB flash drive.

Tip: On newer systems with Secure Boot enabled, it may be necessary to temporarily disable Secure Boot.

Starting Programs from O&O BlueCon

After starting O&O BlueCon, you will be prompted to accept the license agreement. You can then configure basic system settings. In most cases, no changes are required, as O&O BlueCon automatically selects optimal settings for the detected system.

All integrated programs are available via the **Start Menu**, including tools for:

- System recovery
- Administration and diagnostics
- Data security
- Data recovery

The online help can be accessed at any time via **Start / Help and Support**.

Exiting O&O BlueCon

To properly exit O&O BlueCon, click **Start** and choose one of the following options:

- **Restart** – O&O BlueCon is closed and the computer is restarted
- **Shut down** – O&O BlueCon is closed and the computer is powered off

After exiting, the boot medium can be safely removed.

O&O FileExplorer

If a Windows system is damaged or no longer bootable, access to important files is often no longer possible. **O&O FileExplorer** allows full navigation through the computer's file system and is primarily used for **secure data backup and file management** in emergency situations.

To open O&O FileExplorer, click **Start / Programs / FileExplorer** from the Start menu.

Searching for Files and Folders

The integrated search function allows you to specifically search for files or folders.

1. Click **Search** in O&O FileExplorer.
2. Enter the name of the file or folder you are looking for.
3. Optionally, refine the search using additional criteria such as file type or storage location.

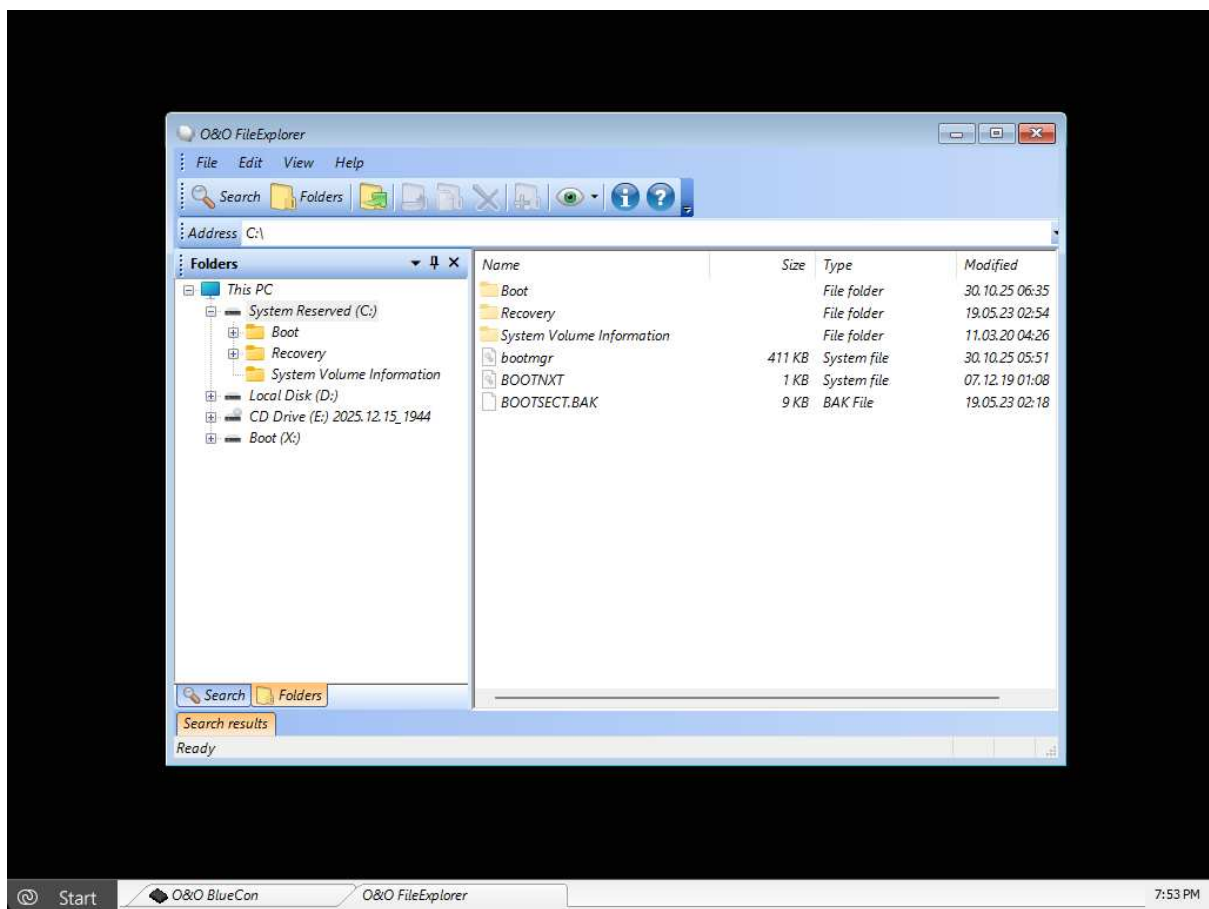


Figure 3: O&O FileExplorer

Tip: On large storage devices, it is recommended to limit the search to specific drives or folders to reduce search time.

Copying, Moving, or Deleting Files and Folders

Files and folders can be conveniently copied, moved, or deleted using the **context menu**. Alternatively, the corresponding functions are also available via the **toolbar**.

These functions are particularly useful for: - backing up important user data - cleaning up damaged directory structures - selectively removing problematic files

Note: If external storage devices are connected after O&O FileExplorer has been started, O&O FileExplorer must be restarted so that all drives are detected correctly.

Connecting a Network Drive

A special feature of O&O FileExplorer is the ability to connect **network drives to Windows shares** on remote systems. This is ideal for backing up data directly to servers, NAS systems, or other computers on the network.

To establish a network drive connection: 1. In the **O&O FileExplorer** file menu, click **Connect Network Drive**. 2. Select an available drive letter. 3. Enter the **UNC path** to the desired share (e.g., \\Server\Share). 4. Log in using a valid user account for the target system.

Explicitly disconnecting network drives is not provided in O&O FileExplorer, as this is generally not required.

If disconnection is necessary, it can be performed via **Start / Run** using the following command:

```
NET USE <Drive>: /DELETE
```

Drive, File, and Permission Properties

Permissions

To view the access permissions of a file or folder, select **Permissions** from the file menu or the corresponding context menu.

File Properties

File properties can be viewed and managed via the context menu of a file. This includes: - viewing and modifying file attributes - viewing NTFS access permissions

Caution: Removing NTFS permissions may permanently prevent access to files. Adding NTFS permissions afterward is not possible in O&O BlueCon.

Drive Properties

By selecting **Properties** from the context menu of a drive, you can view detailed information such as: - total capacity of the storage device - used disk space - available free space

This information is especially useful to ensure sufficient storage capacity is available for backups or data recovery operations.

O&O UpdateRemover

Removing Updates

If a Windows update causes problems—especially when the system no longer starts—you can use **O&O UpdateRemover** to selectively remove faulty updates, even **outside the Windows Recovery Environment**.

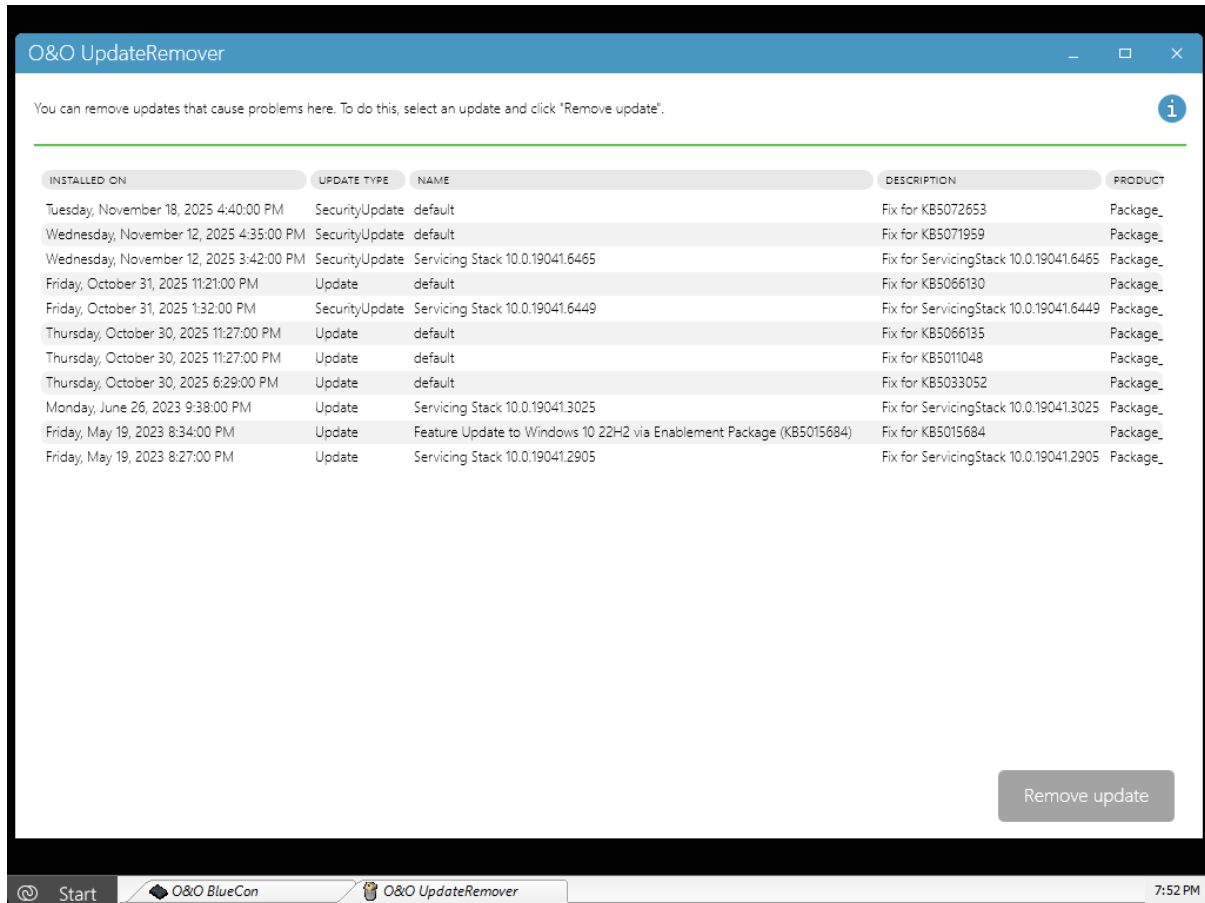


Figure 4: O&O UpdateRemover

After starting O&O UpdateRemover, all Windows updates installed on the system are scanned. Depending on the system's uptime and the number of installed updates, this process may take some time.

Once the list has been fully loaded, proceed as follows:

1. Select the update to be removed by clicking it in the list.
2. Click **Remove update** in the lower-right corner.
3. The progress of the removal process is displayed in the lower section of the window.

Canceling an Update Removal

An ongoing removal process can be canceled at any time. Canceling **does not** cause the update to be reinstalled. Instead:

- the current action is terminated in a controlled manner
- the system is returned to a consistent state

In certain situations, it may be necessary to complete the removal of an update in order for the system to become bootable again.

Note: If an incorrect update is removed by mistake, it can be reinstalled at any time after Windows has started successfully using the standard Windows Update features.

Typical Use Cases

- Windows no longer starts after an update
- Blue screens after Patch Tuesday updates
- Incompatible security or driver updates
- Failed automatic update installations

O&O DeviceManager

O&O DeviceManager provides a comprehensive overview of the hardware installed on the system as well as system-relevant Windows services. It is divided into two main areas:

- **Driver Management**
- **Service Management**

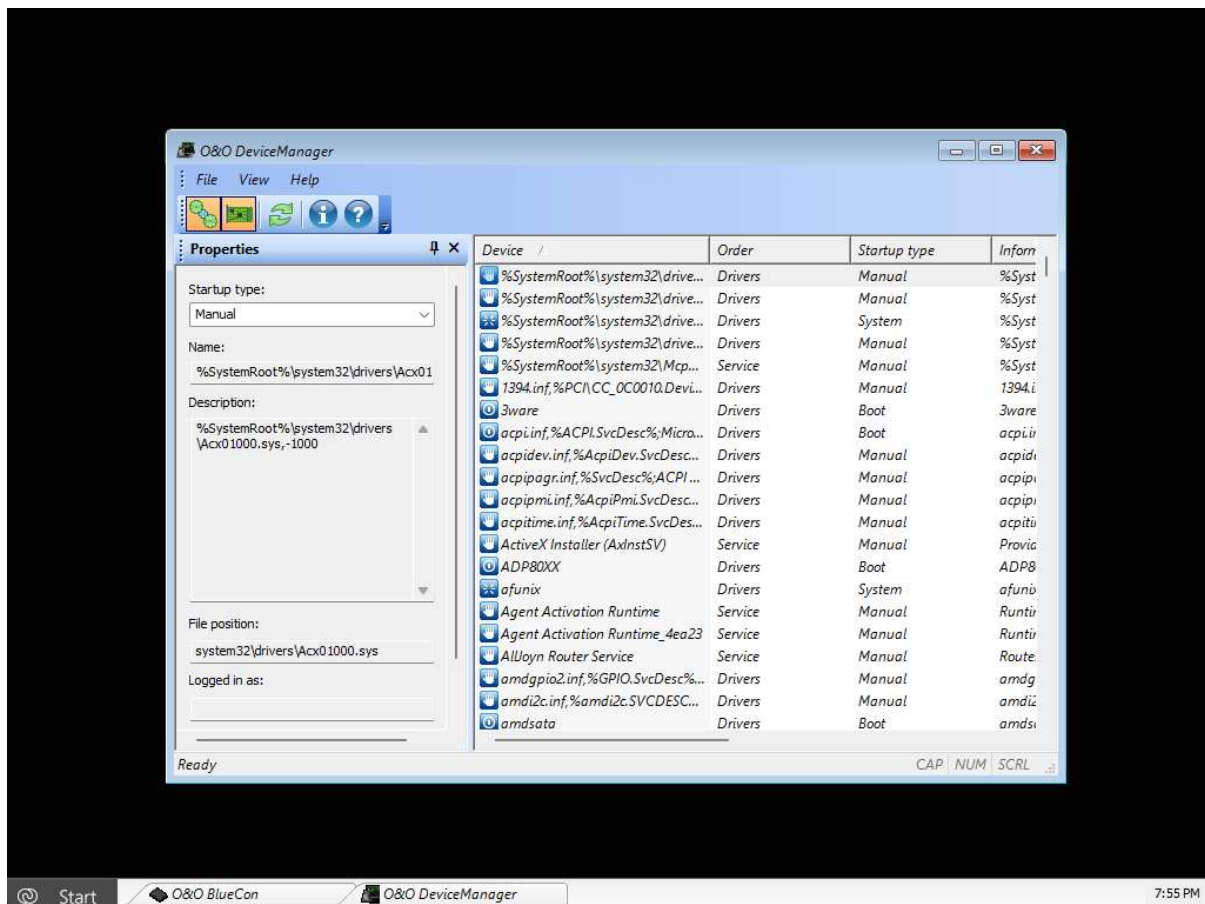


Figure 5: O&O DeviceManager

Starting O&O DeviceManager

- To open **Driver Management**, go to **Start / Programs / Administration / Driver Management**

- To open **Service Management**, go to **Start / Programs / Administration / Service Management**

Driver Management

Driver Management allows you to specifically control the **startup timing of hardware and software drivers**. This function is particularly useful when faulty or incompatible drivers prevent Windows from starting or cause blue screens.

Select the **Driver Management** icon to display a list of all detected drivers. Then select the desired driver to modify its startup behavior.

Driver Startup Modes

The following startup options are available:

- **Disabled**
The driver is not loaded.
This setting is suitable for completely preventing problematic drivers from starting.
- **Boot**
The driver is loaded very early during the boot process, before other system components start.
- **System**
The driver is loaded after boot drivers and initialized by the system at a later stage.
- **Auto (Automatic)**
The driver is automatically loaded after all boot and system drivers have started.
- **Manual**
The driver is not started automatically and must be activated manually if required.

Caution: Disabling essential drivers (e.g., for mass storage controllers or system buses) may prevent Windows from starting. Only make changes if you are certain of the driver's function.

Service Management

In addition to Driver Management, **Service Management** is available. It allows you to modify the **startup type of Windows services**.

This is particularly useful for: - disabling faulty services - temporarily turning off unnecessary services - restoring system startup after failed updates

Operation is analogous to Driver Management: 1. Open **Service Management**. 2. Select the desired service. 3. Change the startup type according to your requirements.

Tip: Disabling non-critical services can help stabilize system startup, but should always be done selectively and with clear intent.

Typical Use Cases

- Windows no longer starts after driver installation
 - Blue screens occurring directly during boot
 - Failed Windows or driver updates
 - Analysis of startup problems in offline systems
-

O&O Check&Repair

With **O&O Check&Repair**, Windows systems can be examined for logical inconsistencies and damage that may prevent stable operation or cause startup problems. In particular, the **Windows component store** and **system-critical files** are analyzed for errors.

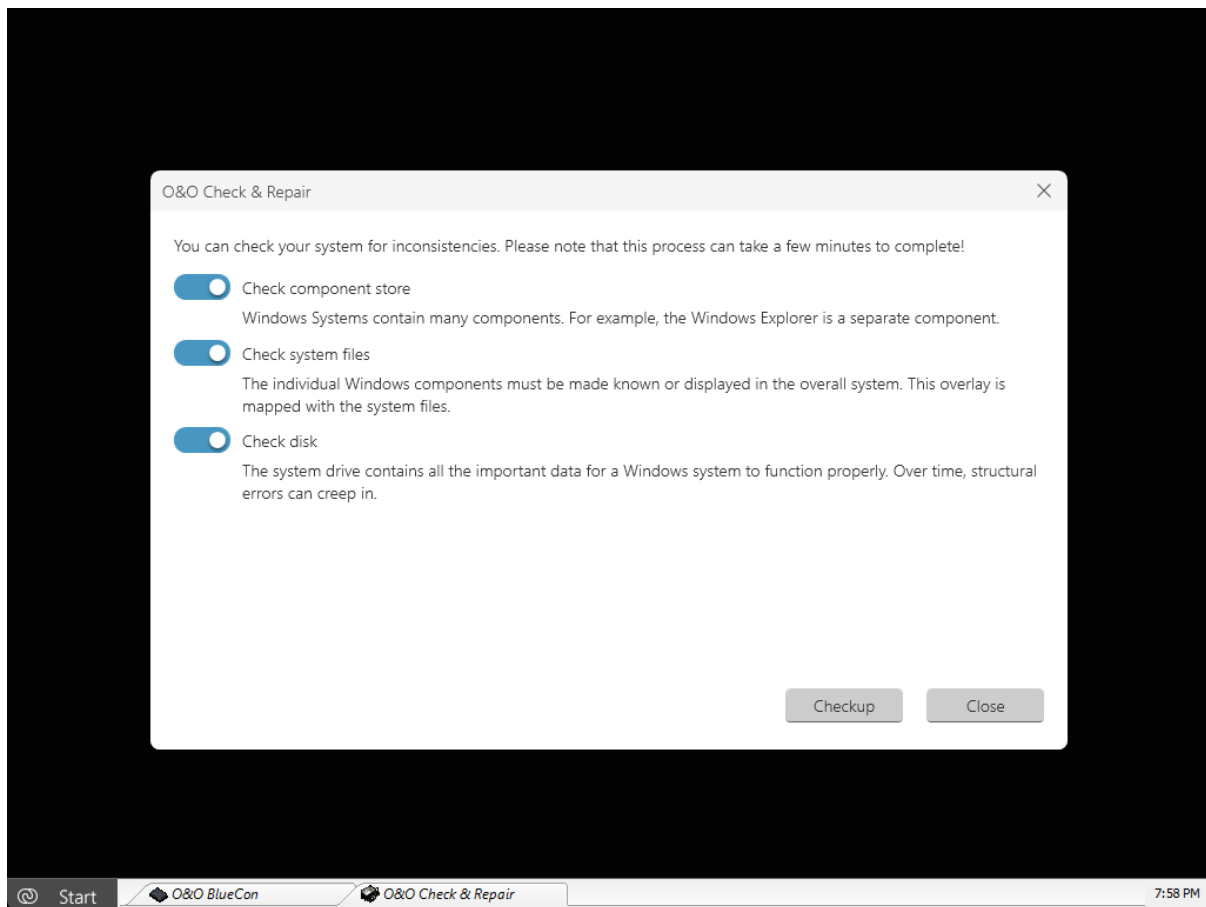


Figure 6: O&O Check&Repair

The check is especially suitable for systems that: - behave unstably - show malfunctions after updates - no longer start correctly - exhibit recurring system errors or crashes

Running a System Check

After starting O&O Check&Repair, the selected system is analyzed automatically. The analysis identifies, among other things:

- damaged or missing system files
- inconsistencies in the Windows component store
- logical file system errors

The progress of the analysis is displayed during the check. Depending on system size and condition, this process may take some time.

Analyzing and Repairing Errors

After the check is complete, O&O Check&Repair clearly displays: - whether errors were found - which components are affected - whether a repair is possible

Using the integrated **repair function**, most detected errors can be corrected directly. Repairs are performed in a controlled manner and without reinstalling Windows.

Tip: O&O Check&Repair is particularly suitable as a preparatory step before further repair actions or a system recovery are carried out.

Typical Use Cases

- Windows no longer starts or hangs during boot
- System errors after failed updates
- Corrupted Windows system files
- Preparation prior to an image restoration
- Stabilization of unstable offline systems

O&O EventViewer

The **O&O EventViewer** enables analysis of **Windows event logs** from both currently detected systems and **imported log files**. This provides an essential diagnostic tool for identifying the causes of startup problems, system crashes, or faulty services.

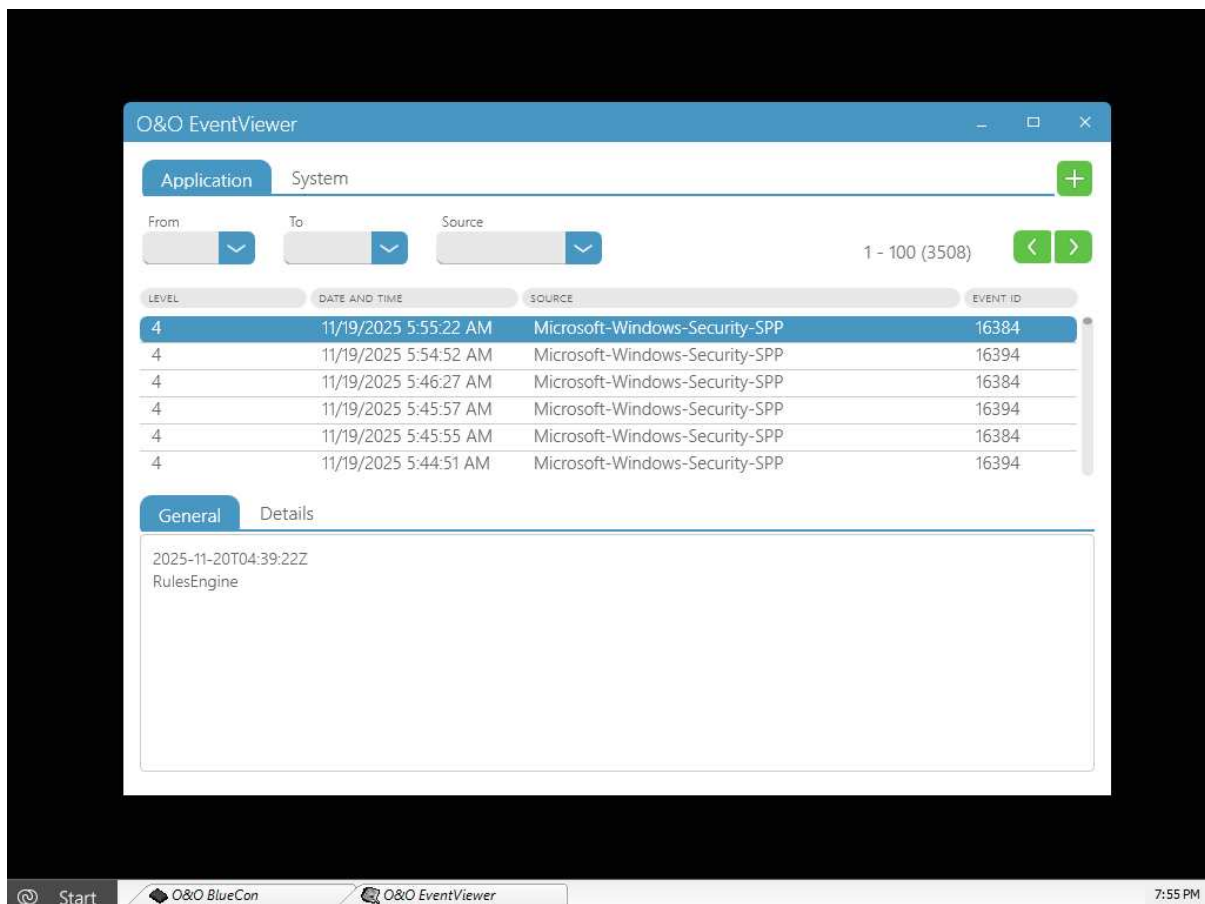


Figure 7: O&O EventViewer

Viewing and Filtering Event Logs

In the upper section of O&O EventViewer, you can switch between the following event logs:

- **System**
- **Applications**

For targeted analysis, the displayed events can be filtered using the buttons above the table, for example by:

- date and time range
- event source
- event type

Navigation buttons next to the filter options allow you to browse through the event log page by page.

Detailed View of Events

To display detailed information about an event entry, click the corresponding row in the table.

In the lower section of the window, you can switch between two views:

- **General** – a clear summary of the event
- **Details** – technical information for in-depth analysis

This information is particularly helpful for clearly identifying faulty drivers, services, or applications.

Importing Event Logs

In addition to analyzing local event logs, external event logs can also be imported.

To import an event log: 1. Click the **plus icon** in the upper-right corner. 2. Select an event log file with the **.evtx** extension. 3. Load the file into O&O EventViewer for analysis.

This function is particularly suitable for: - analyzing logs from backups - examining systems that are no longer bootable - forensic or retrospective error analysis

Typical Use Cases

- Analysis of blue screens and system crashes
- Troubleshooting non-bootable Windows systems
- Identification of faulty drivers or services
- Evaluation of imported event logs from backups

O&O RegEditor

The **O&O RegEditor** is modeled on the familiar Windows Registry Editor in both structure and operation and provides full access to the Windows registry database. This database stores all settings for Windows, installed applications, drivers, and services.

A special feature of the O&O RegEditor is **direct navigation via the address bar**, which allows quick and precise access to specific registry keys. This is particularly useful for troubleshooting and repairing offline and emergency systems.

To open O&O RegEditor, click **Start / Programs / Administration / O&O RegEditor**.

[!CAUTION]

Warning:

Improper use of O&O RegEditor can cause serious problems affecting the entire system and may require a complete reinstallation of the operating system.

Before making any changes to the Windows registry, create a full backup of your data, for example using **O&O DiskImage**. O&O cannot guarantee that problems caused by incorrect use of O&O RegEditor can be resolved.

The stability and functionality of a Windows system depend heavily on the information stored in the registry database. Incorrect or corrupted entries can lead to a complete system failure.

With O&O RegEditor, the registry database of a maintenance system can be read and edited even if the installed Windows system is no longer bootable.

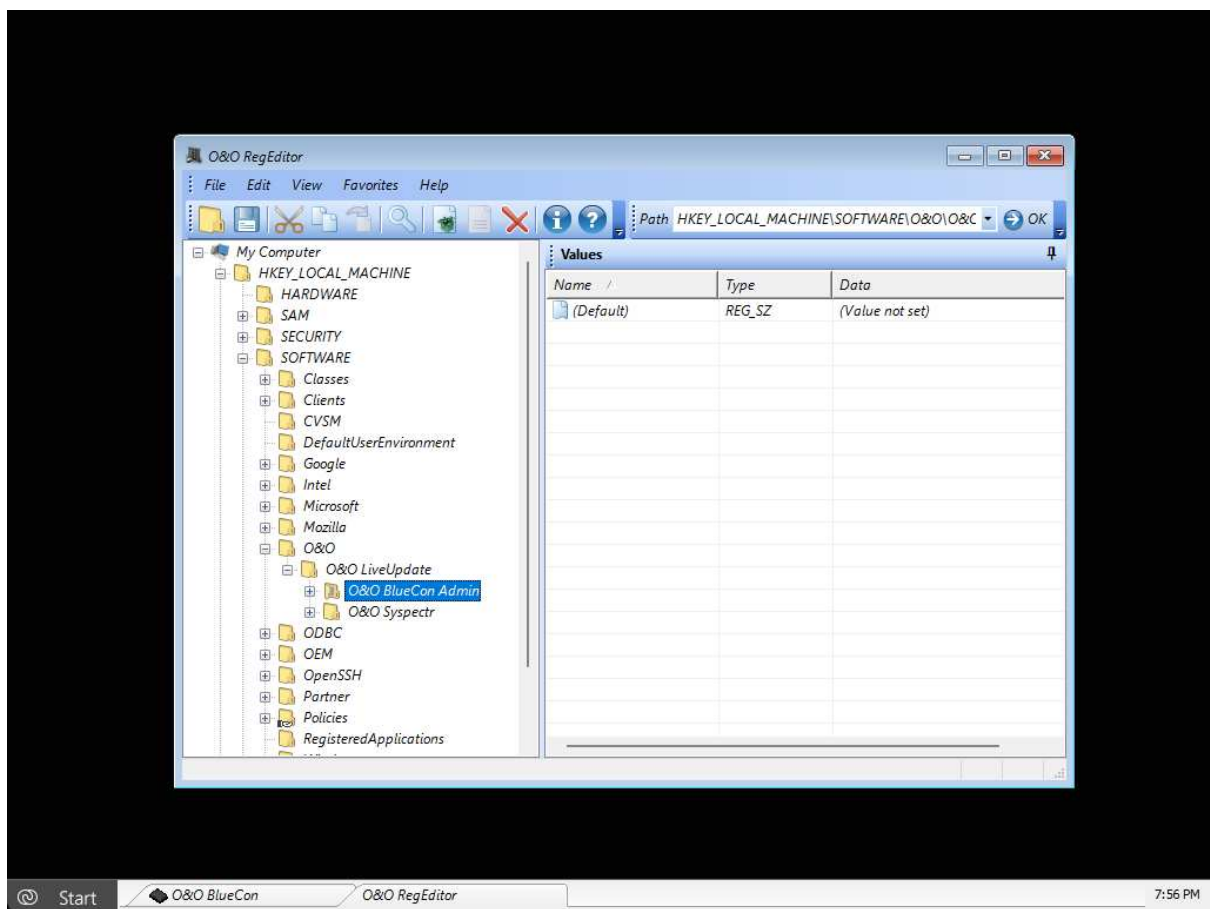


Figure 8: O&O RegEditor

Navigation is performed—just as in Windows—via a tree structure in the left pane. The following two main branches are available:

- **HKEY_LOCAL_MACHINE** – contains system-specific settings
- **HKEY_USERS** – contains user-specific settings for all user profiles

The Windows shortcut key **HKEY_CURRENT_USER** does not exist because no user is currently logged on. The corresponding entries can be found under: **HKEY_USERS\<username>**.

The shortcut key **HKEY_CLASSES_ROOT** does not exist directly, but can be accessed via **HKEY_LOCAL_MACHINE\SOFTWARE\CLASSES** or through the corresponding subkeys under **HKEY_USERS**.

The key **HKEY_LOCAL_MACHINE\SYSTEM\CurrentControlSet** does not exist because no active ControlSet is loaded. Instead, multiple ControlSets are available, such as **HKEY_LOCAL_MACHINE\SYSTEM\ControlSet001** and **HKEY_LOCAL_MACHINE\SYSTEM\ControlSet002**.

The currently used ControlSet is indicated under **HKEY_LOCAL_MACHINE\SYSTEM\Select\Current**. Typically, this is **ControlSet001**.

The shortcut key **HKEY_CURRENT_CONFIG** can be accessed via **HKEY_LOCAL_MACHINE\SYSTEM\ControlSetXXX\Hardware Profiles\Current**, where **XXX** represents the active ControlSet.

A **key** corresponds to a folder, while a **value** represents a setting within that key. Each key can contain one or more values.

O&O RegEditor supports all registry data types commonly used in Windows:

- **REG_SZ** – string
- **REG_DWORD** – 32-bit value
- **REG_QWORD** – 64-bit value
- **REG_MULTI_SZ** – multiple strings
- **REG_EXPAND_SZ** – expandable string (including environment variables)
- **REG_BINARY** – binary data

Numeric values can be entered in hexadecimal, decimal, or binary format.

To search the registry database, click **Search** in the toolbar, enter the desired key, value, or data content, and enable the appropriate search options.

New keys can be created via the context menu of an existing key. New values can also be added via the context menu, selecting the desired data type.

Values can be edited by double-clicking them or via the context menu, and deleted if required.

To manage permissions, select the desired key and choose **Edit / Permissions**. You can assign **Full Control**, **Read permissions**, or **advanced permissions** to users or groups. Permissions can optionally be inherited by subkeys.

Before making changes, it is recommended to export the affected key. Using **File / Export**, the key can be saved as a *.reg file. These files are fully compatible with the Windows Registry Editor and can later be re-imported using **File / Import**.

O&O UserManager

With **O&O UserManager**, you have full control over the **local user management** of a Windows system. This tool is designed specifically for emergency and maintenance scenarios where access to Windows is no longer possible, user passwords have been forgotten, or user accounts need to be managed offline.

To open O&O UserManager, click **Start / Programs / Administration / User Management**.

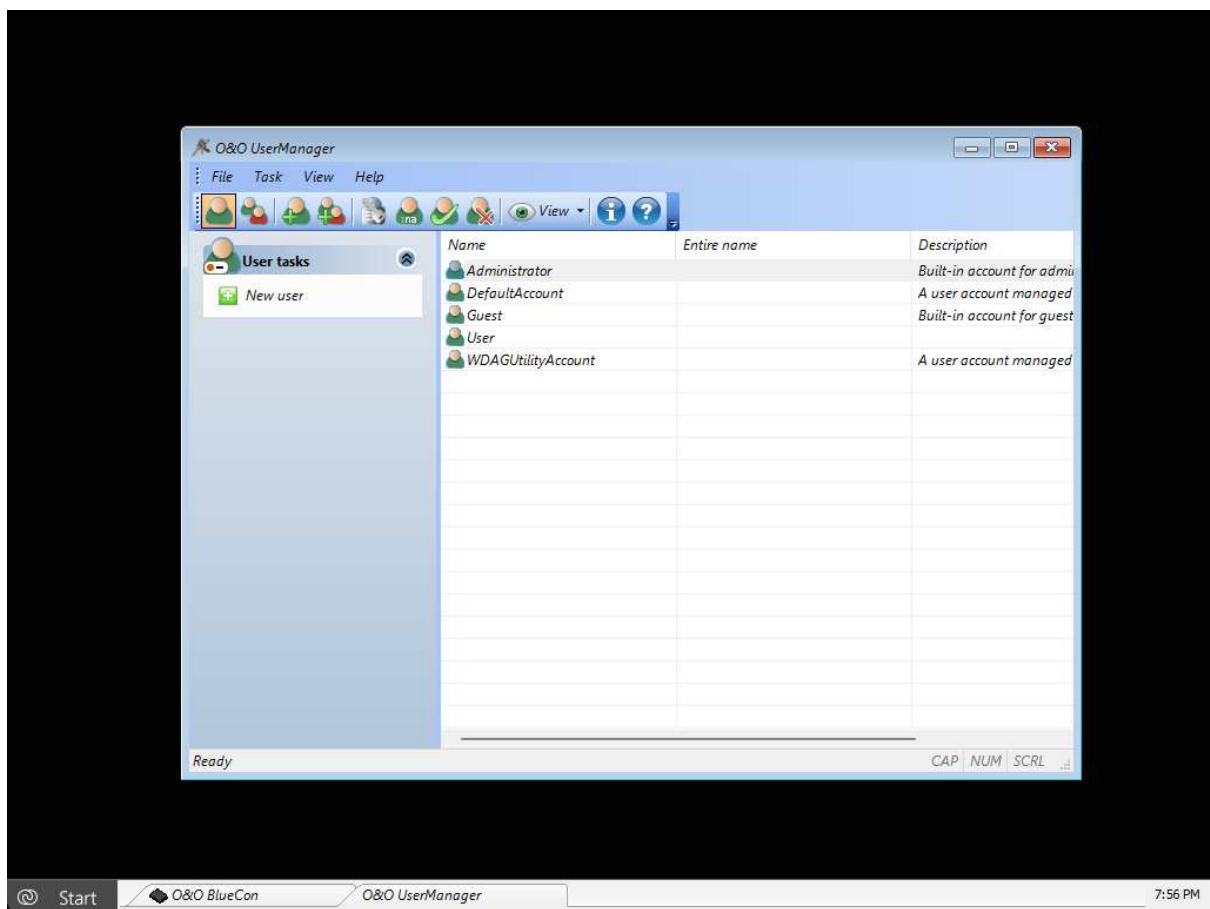


Figure 9: O&O UserManager

Note: O&O UserManager can manage local user accounts only. Changes to domain accounts or online accounts (e.g., Microsoft accounts) are not possible.

Using O&O UserManager, existing user profiles can be modified, new users can be created, and user groups can be managed. All actions are performed offline directly on the target system.

To modify an existing user profile, select the **Create User Profile** icon, then select the desired user from the list and perform the required action under **User Actions**, such as changing the password or user name.

[!CAUTION] **Important:** If passwords are changed using O&O BlueCon, access to encrypted files (e.g., EFS) will no longer be possible. Existing encryption cannot be restored after a password change.

Note: Existing passwords cannot be decrypted. However, passwords can be changed even if the original password is unknown. This is particularly useful when a user has forgotten their password.

New user accounts can also be created directly. To do so, select the **User Accounts** icon and create a new user profile via **User Actions / New User**. The newly created user will then appear in the user list.

Note: Newly created users are not assigned to any user group by default and therefore do not have elevated privileges.

In addition, new user groups can be created. Select the **User Group** icon and create a new group via **Group Actions / New Group**. In the subsequent dialog, users can be assigned directly to the group.

Microsoft PowerShell

Microsoft PowerShell is used in O&O BlueCon as a command-line environment for entering commands directly. It allows the execution of individual commands as well as **batch files**, and is particularly suited for experienced administrators who want to perform system-level tasks manually or via scripts.

To open Microsoft PowerShell, click **Start / Programs / Accessories / Command Prompt**.

Using the command line, you can, among other things: - retrieve system information - perform file system operations - manage network connections - execute repair and diagnostic commands

The **HELP** command lists all available commands along with a brief description of their function. Please note that the output scrolls automatically once the bottom of the screen is reached.

Some commands offer the option to display output page by page. This can be controlled using appropriate parameters, for example: `dir /p`.

A detailed description of all available commands and their parameters can be found in the **Command Reference** of this documentation.

Batch Processing

Microsoft PowerShell provides support for **batch processing**, which allows multiple commands to be executed automatically in sequence. This is especially useful when recurring command sequences are required and individual commands do not need to be entered manually each time.

To create a batch file, proceed as follows:

1. Create a new ASCII text file using a text editor, for example **O&O Notepad**.
2. Enter the required commands along with their arguments.
Always use **one command per line**.
3. Save the file with the **.BAT** extension.
It is recommended to use a filename in **8.3 format**, as short filenames are easier to access in console mode.
4. Start the batch file from Microsoft PowerShell, for example: `C:\TEST.BAT`.

The commands contained in the batch file are then executed in the specified order.

To abort the execution of a batch file prematurely, press **Ctrl + C**.

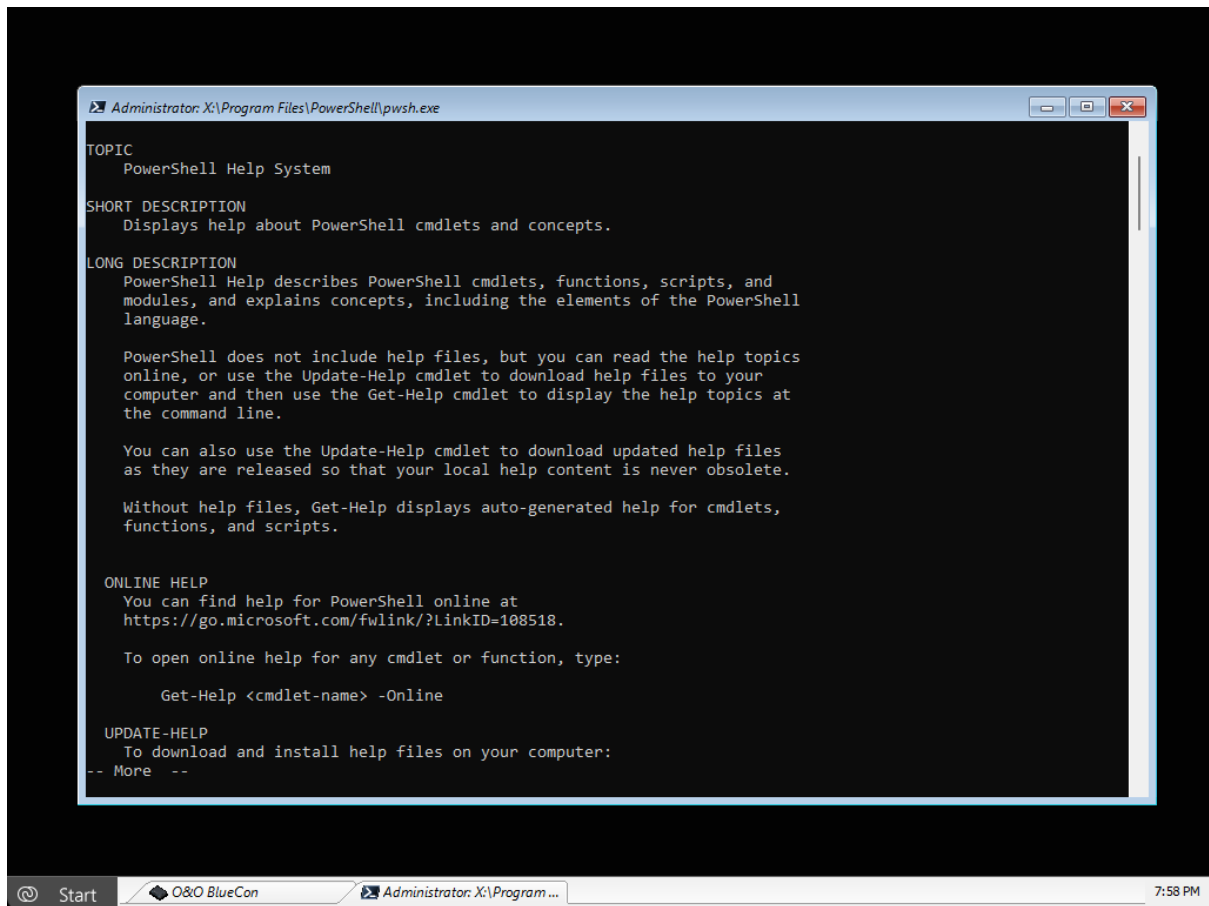


Figure 10: Microsoft PowerShell

Command Reference

Microsoft PowerShell provides a wide range of commands. The command reference lists all commands, their syntax, and available parameters.

If you need help for a specific command, you can use the `/?` command-line switch to display a brief description of the command's syntax and purpose.

attrib Displays or changes file attributes.

Category	Description
Description	Displays or changes file attributes (read-only, archive, system, hidden, compressed).
Syntax	<code>attrib [+ / -] [rash] [<Drive:>] [<Path>] [<Filename>]</code>
Parameters	
<code><Drive> <Path> <Filename></code>	Path and name of the file(s) to modify
<code>+</code>	Sets attributes
<code>-</code>	Clears attributes
<code>r</code>	Read-only
<code>a</code>	Archive
<code>s</code>	System
<code>h</code>	Hidden

cd Displays the current directory or changes to another directory.

Category	Description
Syntax	<code>cd [[<Drive:>]<Path> / ..]</code>
Without parameters	Displays the current drive and directory
<code><Drive> <Path></code>	Changes to the specified directory
<code>..</code>	Changes to the parent directory
Example	<code>C:\Windows>cd ..</code>

cls Clears the screen.

Category	Description
Syntax	<code>cls</code>
Parameters	None

copy Copies one or more files to another location.

Category	Description
Syntax	<code>copy <Source> <Target></code>
<code><Source></code>	File or files to copy
<code><Target></code>	Destination path
Example	<code>copy C:\test D:\backup</code>

del Deletes files.

Category	Description
Syntax	del [<Drive:>] [<Path>] <Filename>
Example	del C:\test.txt

deltree Deletes a directory including subfolders.

Category	Description
Syntax	deltree [<Drive:>] <Path>
Example	deltree C:\Temp

device / service Starts the O&O DeviceManager.

Category	Description
Syntax	device / service
Parameters	None

dir Lists files and directories.

Category	Description
Syntax	dir [/p] [<Drive:>] [<Path>] [<Filename>]
	/p Displays output page by page
Example	dir /p

edlin Starts O&O Notepad.

Category	Description
Syntax	edlin
Parameters	None

exit Closes Microsoft PowerShell.

Category	Description
Syntax	exit
Parameters	None

help Lists all available commands.

Category	Description
Syntax	help
Tip	Use command <code>/?</code> for detailed help

info Displays file system and drive information.

Category	Description
Syntax	info { hdd / <Drive:> }
hdd	Displays all drives
<Drive>	Shows details for a specific drive

mkdir Creates a directory.

Category	Description
Syntax	mkdir [<Drive:>]<Path>
Example	mkdir C:\Data

passwd Changes or removes a user account password.

Category	Description
Syntax	passwd <UserAccount> [<Password>]
Example	passwd administrator test

rename Renames a file.

Category	Description
Syntax	rename [<Drive:>][<Path><Old> <New>
Example	rename test.txt test1.txt

rmdir Deletes a directory.

Category	Description
Syntax	rmdir [<Drive:>]<Path>

Category	Description
----------	-------------

safeerase Securely deletes files, folders, or drives.

Category	Description
Syntax	safeerase [options]
Security levels	/highestsecurity ... /lowestsecurity
Options	/output, /verbose, /silent, /showdisks, /volume, /disk, /freespace, /y
Example	safeerase /freespace C:

scopy Copies files while preserving NTFS permissions.

Category	Description
Syntax	scopy <Source> <Target>

type Displays the contents of a text file.

Category	Description
Syntax	type [/p] [<Drive:>] [<Path>] <Filename>
Example	type C:\readme.txt

user Lists all local user accounts.

Category	Description
Syntax	user
Parameters	None

ver Displays the PowerShell version.

Category	Description
Syntax	ver

vmap Lists all mounted volumes and mappings.

Category	Description
Syntax	vmap

xcopy Copies files and folders recursively.

Category	Description
Syntax	<code>xcopy [/e] [/s] <Source> <Target></code>
<code>/e</code>	Copies empty subdirectories
<code>/s</code>	Preserves NTFS attributes
Example	<code>xcopy C:\Data D:\Backup /e</code>

O&O SystemInfo

With **O&O SystemInfo**, you get a comprehensive overview of the central system settings of a Windows operating system. In addition, system parameters can be displayed, disabled, modified, or deleted in order to analyze startup problems and correct faulty configurations.

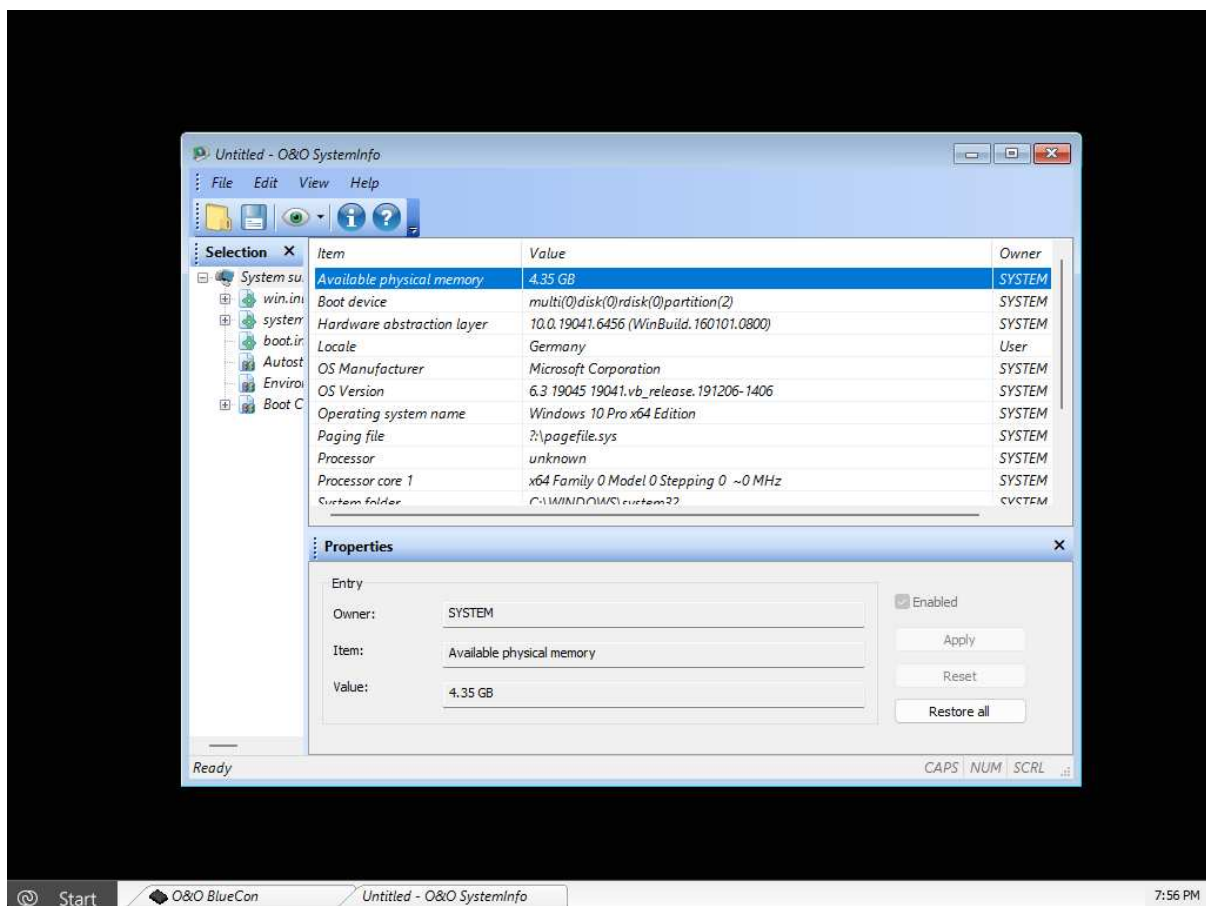


Figure 11: O&O SystemInfo

To open O&O SystemInfo, click **Start / Programs / Administration / System Information**.

Note: The Boot Configuration Data (BCD) for Windows Vista and newer Windows versions is only supported to a limited extent. The BCD store cannot be modified and is displayed for monitoring and analysis purposes only.

O&O SystemInfo provides, among other things, the following information:

- Configuration of **win.ini**
- Configuration of **system.ini**

- Configuration of **boot.ini**
- Startup entries
- Environment variables

A particularly important area is the overview of **startup entries**. This includes both programs from startup folders and entries from central startup locations in the Windows registry, such as:

HKEY_LOCAL_MACHINE\SOFTWARE\Microsoft\Windows\CurrentVersion\Run
HKEY_CURRENT_USER\SOFTWARE\Microsoft\Windows\CurrentVersion\Run

These locations are frequently abused by malware such as viruses, trojans, or spyware. Using O&O SystemInfo, startup entries can be selectively **enabled or disabled** to prevent the automatic execution of malicious or unwanted programs.

To edit system parameters, select an entry or configuration from the list. The corresponding parameter is displayed in the edit window and can be adjusted there.

To disable a system parameter, select the corresponding entry and clear the checkbox next to **Enabled**. The parameter remains stored but is no longer applied.

To delete a system parameter, select the desired entry so that its value appears in the edit window, and then remove it. Changes take effect immediately.

O&O SystemInfo is particularly suitable for analyzing startup problems, cleaning up startup entries, and controlling system-relevant configurations in offline or emergency scenarios.

System Settings

Using the system settings, parameters such as screen resolution, language and keyboard settings, and time zone can be configured. In addition, the network can be enabled and the operating system can be selected. The latter is especially important if multiple operating system installations exist on the target computer. This selection determines which system databases are addressed. All tools that display system-dependent information automatically access the selected system. Changing the target system or enabling the network afterward is possible at any time during runtime via the Control Panel.

To open the system settings, click **Start / Settings** and then **Control Panel**.

Loading Drivers

If a device—such as a hard drive or a network adapter—is not automatically detected when using the boot CD under Windows PE, the required controller driver may be missing (for example, in the case of RAID controllers).

Drivers can be loaded immediately after starting the boot CD in the **O&O System Settings** dialog under the **Drivers** tab. This dialog can also be accessed later via **Start / O&O System Settings / Drivers**.

To load a driver, proceed as follows: 1. Open the **Drivers** tab in the **O&O System Settings** dialog as described above. 2. All devices detected by Windows as well as devices without an installed driver are displayed. Select the device for which you want to load a driver. 3. Click **Load**. 4. Select the driver, for example from one of the connected hard drives, USB flash drives, or a manufacturer CD. 5. In the **Open** dialog, confirm to install the driver. 6. Finally, a program message will inform you about the progress of the installation.

Note: You can remove the boot CD from the drive in order to insert a manufacturer's driver CD.

Note: After loading an additional driver under Windows PE, a restart prompt may appear. This message is automatically generated by Windows PE and is irrelevant when booting from CD. Please decline the restart request and follow the further instructions in the dialog window.

Note: Encrypted drives are not supported under Windows PE, with the exception of BitLocker-encrypted drives.

Web Browser

The integrated **Firefox® web browser** allows access to the internet directly from within the O&O BlueCon environment. This makes it possible to retrieve information, documentation, drivers, or support files from the web that are helpful when analyzing and resolving system issues.

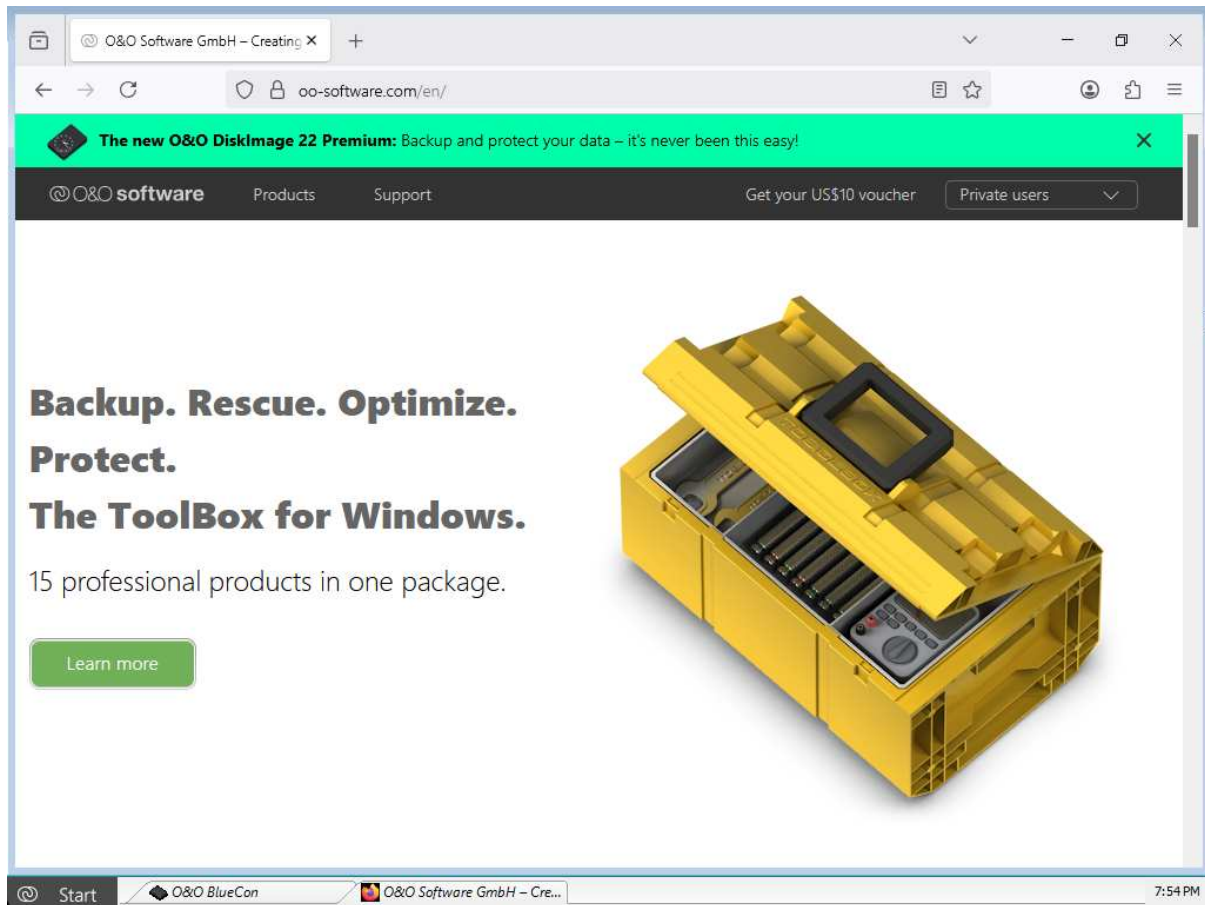


Figure 12: Web Browser

The web browser is particularly useful for: - looking up technical documentation - accessing manufacturer websites - downloading required files or drivers - researching error messages or event codes

Note: To use the Firefox® web browser, a functioning network connection within your LAN is required. Without network connectivity, internet access is not possible.

O&O Notepad

O&O Notepad is a simple text editor for viewing, editing, and saving text files. It is especially suitable for administrative tasks such as creating or modifying configuration files, scripts, or log files.

O&O Notepad supports both **ASCII** and **Unicode** files and can therefore be used for a wide range of system and configuration files.

To open O&O Notepad, click **Start / Programs / Accessories / Editor**.

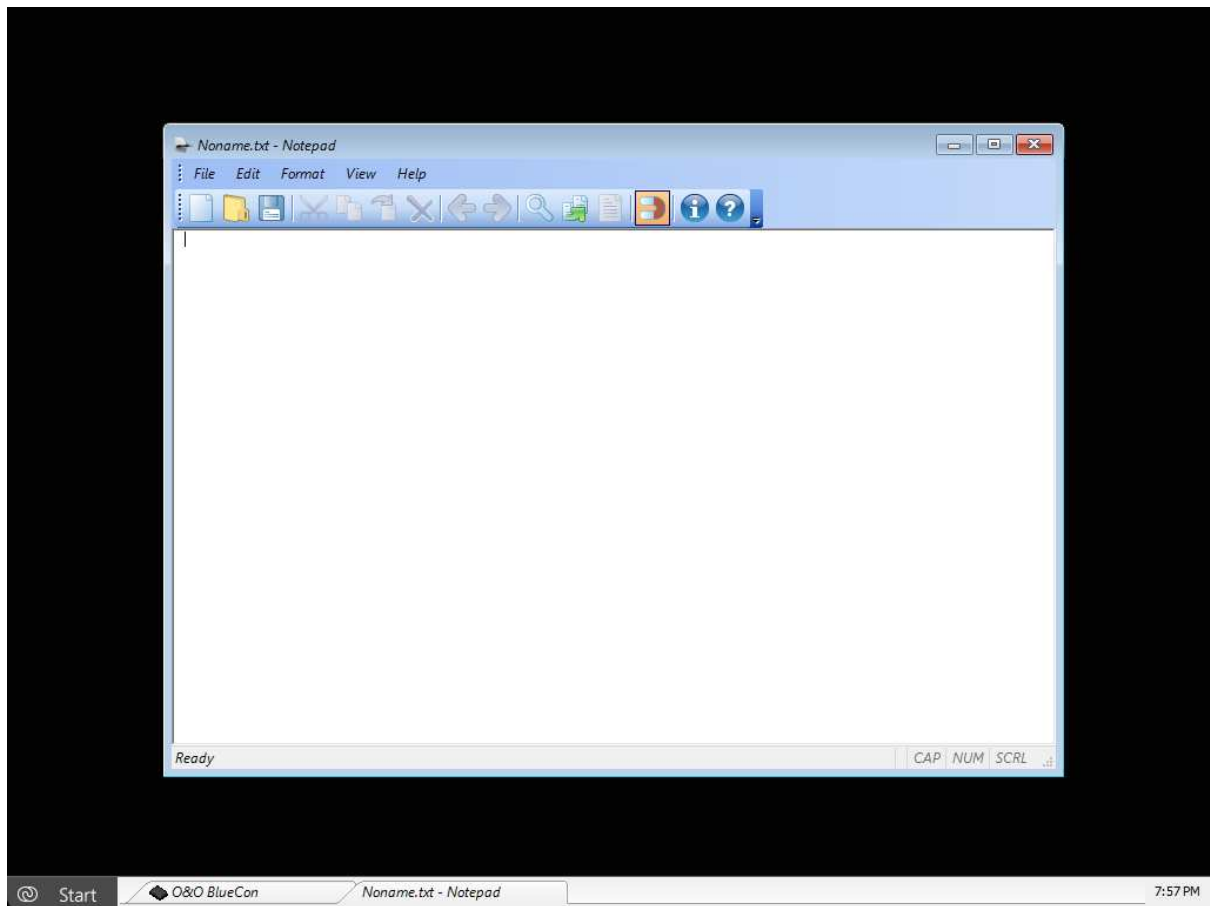


Figure 13: O&O Notepad

O&O Calc

O&O Calc is a calculator for basic arithmetic operations as well as for converting between different number systems. The following formats are supported:

- Decimal
- Hexadecimal
- Octal
- Binary

In addition, **formula expressions** can be entered and evaluated directly, which is particularly useful for technical calculations or value analysis.

To open O&O Calc, click **Start / Programs / Accessories / Calculator**.